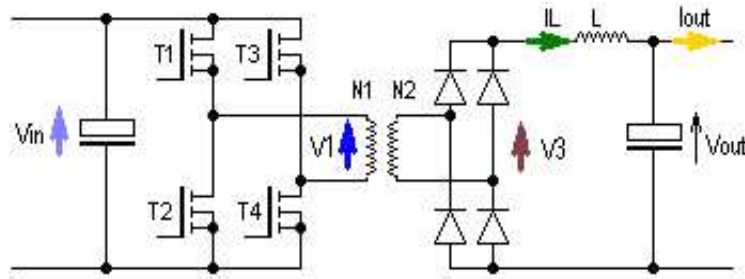


Home Help Print

## Fullbridge Push-Pull Converter



$V_{in\_min}$ / V	$V_{in\_max}$ / V	$V_{in}$ / V for the calculations	
40	48	48	
$V_{out}$ / V	$I_{out}$ / A	f / kHz	Calculate
200	28	150	
<input checked="" type="checkbox"/> Proposal	L / H	$\Delta I_L$ / A for $V_{in\_max}$	Coil Data
	12.15E-6	11.2	
<input checked="" type="checkbox"/> Proposal	$N_1 / N_2$ :	0.19	Transformer Data

The values of all input fields can be changed.

The proposed value for  $L$  is chosen such that  $\Delta I_L = 0.4 \cdot I_{out}$  for  $V_{in\_max}$ .

The proposed value for  $N_1/N_2$  is chosen such that  $V_{out}$  is just achieved when  $V_{in} = V_{in\_min}$ .

The cores are suggested in such a way that they do not warm up any more to than approx. 30 K in relation to the ambient.

The wire cross sections are always suggested for a current density of  $3A/mm^2$

Tip: Its best not to modify  $N_1/N_2$  ;-)



By [Dr. Heinz Schmidt-Walter](#), [Holger Wenzel](#), Thomas Zänker, Richard Morgan and Johnalan Kegan.