

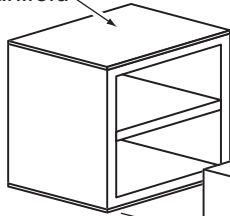
HOMEBUILT COLLECTOR ASSEMBLY

4WT48 70 cfm
or 4WT47 105 cfm
Grainger fan
make shroud of
aluminum
house trim stock

2E245
"on 110 / off 90"
Grainger t'stat

Fan and Solar Thermostat Inlet Shroud

1/4" plywood on
top and bottom
of manifold



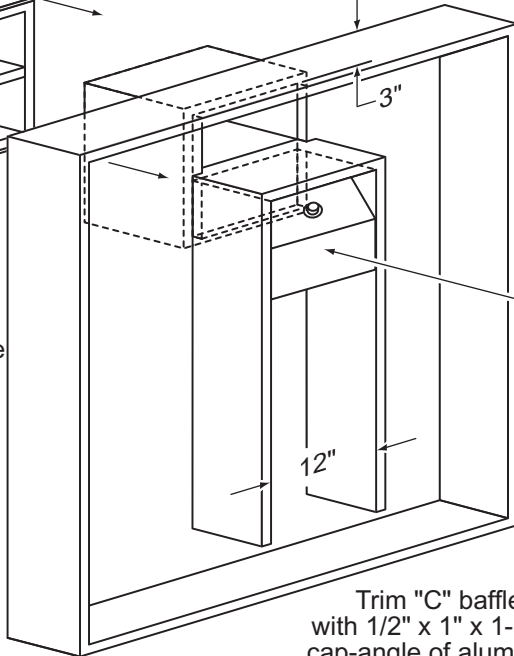
Manifold

14" square x 9" deep

(bond to case w/urethane construction adhesive)

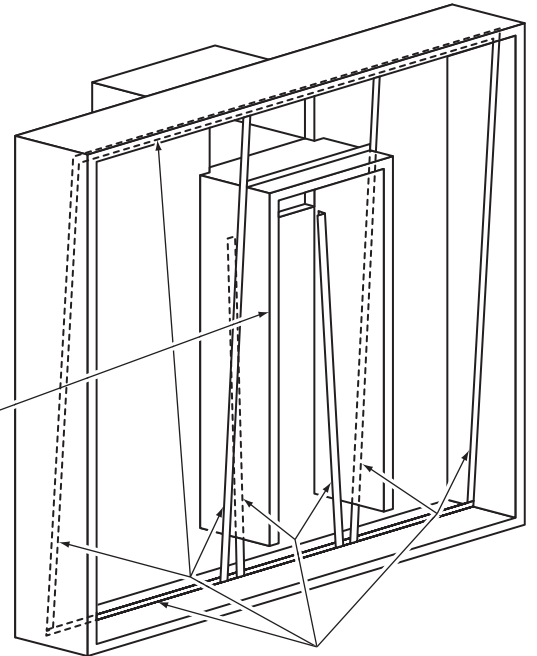
Case

6" deep



Trim "C" baffle
with 1/2" x 1" x 1-1/2"
cap-angle of aluminum
flashing or
house trim stock

Absorber Mounting-Rails



Use a continuous fillet
of silicone adhesive
to install 1" x 1" "L" aluminum flashing
mounting rails, for 1" thick filter-media
solar absorber (use filter-media from
Grainger industrial supply catalog,
item 4WZ72)

Case Construction - Side View at Bottom

